

ENVELOPE / ASSEMBLY DRAWING

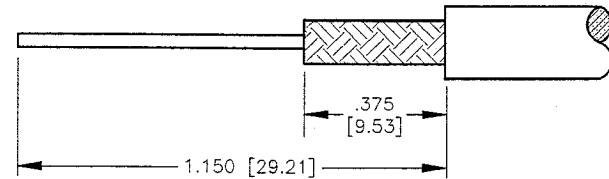
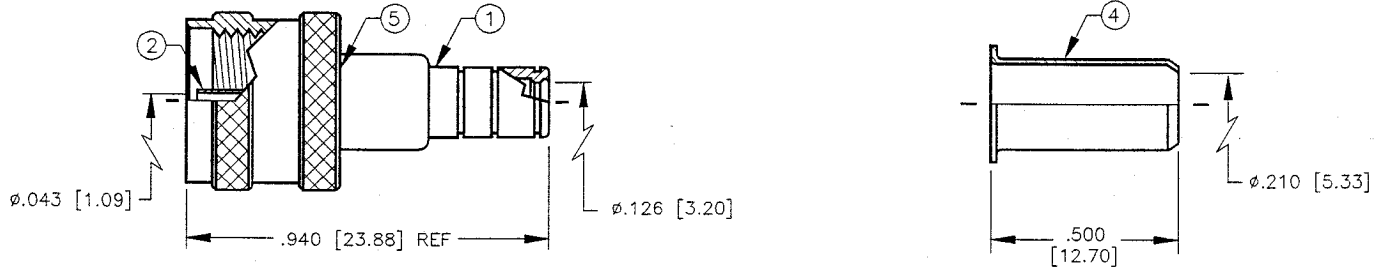
000000

SPECIFICATION CONTROL DRAWING

THIS DRAWING CONTAINS INFORMATION PROPRIETARY TO RF INDUSTRIES, LTD. ANY UNAUTHORIZED USE OF THIS DRAWING IS EXPRESSLY PROHIBITED. ANY VIOLATION IS PUNISHABLE UNDER U.S. COPYRIGHT LAWS.

REV	DESCRIPTION	DWN	DATE	APPROVED
G	CHANGE CONTACT DIAMETER	WMD	1/27/94	C. JONES
H	OPEN REAR OF SHELL \ CHG CONTACT PLATING TO GOLD	KMM	1/24/96	R. RICE
J	ADD OD DIMENSION OF CONTACT	KMM	7/18/96	R. RICE
K	CHANGE CONTACT OD	CZS	3/30/99	R. RICE

ALL DIMENSIONS ARE REFERENCE ONLY



SUGGESTED CRIMP DIES: .052 & .213

SUGGESTED STRIPPING INSTRUCTIONS

SPECIFICATIONS:

IMPEDANCE: 50 OHMS
 WORKING VOLTAGE: 335 VRMS @ SEA LEVEL
 FREQUENCY RANGE: 0-2.5 GHz
 INSERTION LOSS: ≤ -0.2 dB @ 2 GHz
 VSWR MAX: 1.25:1 @ 2 GHz
 FOR RG-58, 58A, 58C, 141, 141A, 400/U, BELDEN 8240, 8259, 8262, 9201, 9203, 9310, 9311, COMM/SCOPE 0268 & CUSHCRAFT ULTRALINK TL92463E

DIMENSIONS ARE IN INCHES AND [MILLIMETERS]

UNLESS OTHERWISE NOTED TOLERANCES ARE:
 DECIMALS DIAMETER

RF connectors
 DIVISION OF RF INDUSTRIES, LTD.

7610 MIRAMAR RD
 SAN DIEGO, CA 92126
 (619)549-6340
 (619)549-6345 FAX

RFU-600-1

MINI UHF MALE CRIMP

ITEM	DESCRIPTION	QTY	MATERIAL	FINISH
5	SHELL	1	BRASS	NICKEL
4	FERRULE	1	COPPER	NICKEL
3	DIELECTRIC	1	DELRIN	NONE
2	CONTACT	1	BRASS	GOLD
1	BODY	1	BRASS	NICKEL

DRAWN C. ZUNIGA	3/30/99
CHECKED <i>R. Rice</i>	4/7/99
DRY/DRAWN M. P.	7/18/96
APPROVALS	DATE

SIZE A	CABLE GROUP C	DWG NO. 7981	REV K
SCALE: 2:1	CAD FILE 13ARC B	SHEET 1 OF 1	